

BROADBENT WOODS SUBDIVISION NO. 4

A SUBDIVISION OF A PART OF THE NORTHWEST 1/4 & SOUTHWEST 1/4 OF SECTION 21, T4N, R3W, DELTA TOWNSHIP, EATON COUNTY, MICHIGAN.

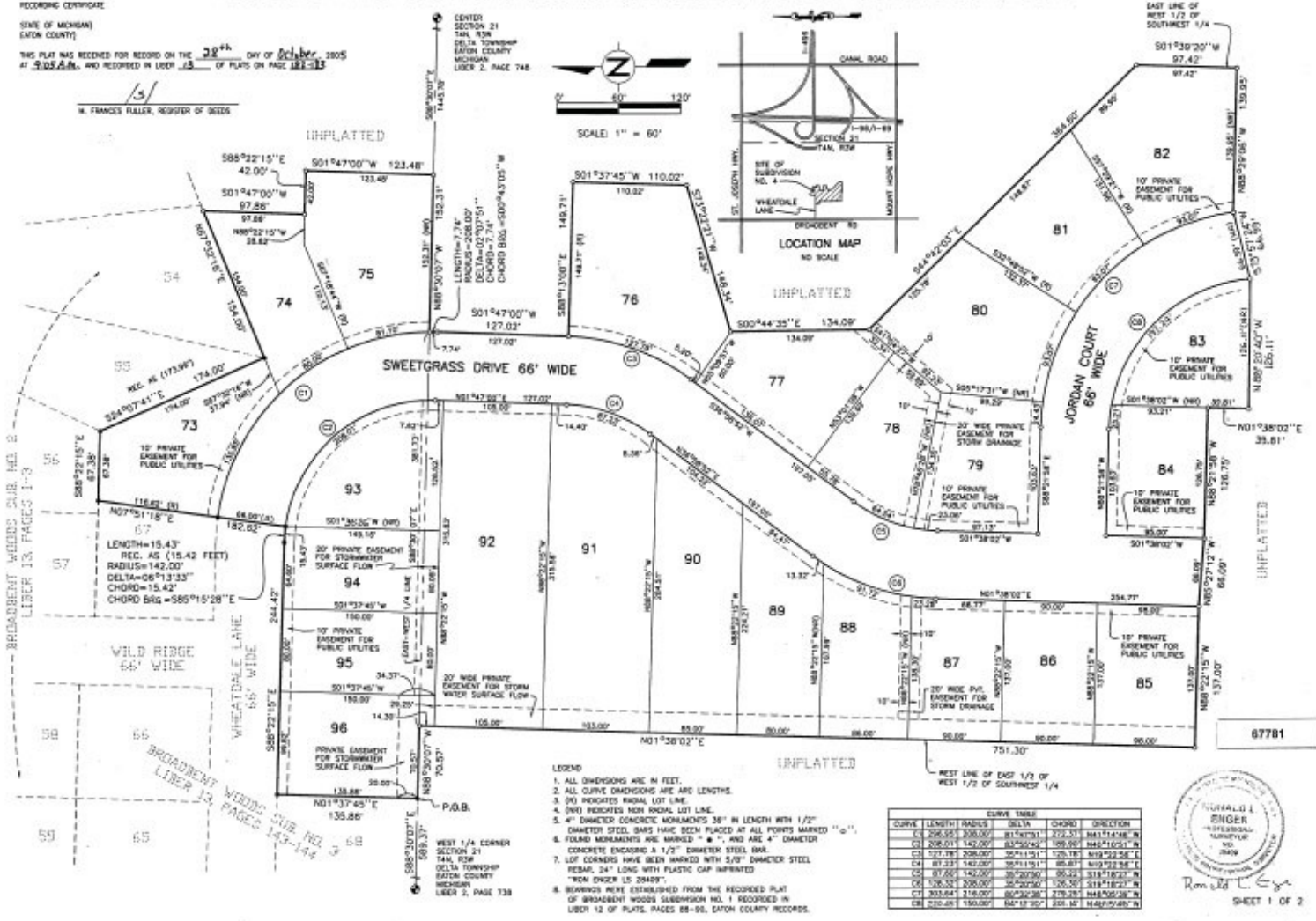
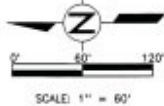
RECORDING CERTIFICATE

STATE OF MICHIGAN
EATON COUNTY

THIS PLAN WAS RECEIVED FOR RECORD ON THE 22nd DAY OF October, 2005
AT 3:03 P.M., AND RECORDED IN LIBER 73 OF PLATS ON PAGE 182-183

M. FRANCIS FULLER, REGISTER OF DEEDS

CENTER
SECTION 21
T4N, R3W
DELTA TOWNSHIP
EATON COUNTY
MICHIGAN
LIBER 2, PAGE 748



LEGEND

1. ALL DIMENSIONS ARE IN FEET.
2. ALL CURVE DIMENSIONS ARE ARC LENGTHS.
3. (R) INDICATES RADIAL LOT LINE.
4. (D) INDICATES NON RADIAL LOT LINE.
5. 4" DIAMETER CONCRETE MONUMENTS 36" IN LENGTH WITH 1/2" DIAMETER STEEL BARS HAVE BEEN PLACED AT ALL POINTS MARKED "C".
6. FOUND MONUMENTS ARE MARKED "M", AND ARE 4" DIAMETER CONCRETE ENCASED IN 1/2" DIAMETER STEEL BAR.
7. LOT CORNERS HAVE BEEN MARKED WITH 5/8" DIAMETER STEEL REBAR, 24" LONG WITH PLASTIC CAP IMPRINTED "RCA INCHES 15 20487".
8. BEARINGS WERE ESTABLISHED FROM THE RECORDED PLAT OF BROADBENT WOODS SUBDIVISION NO. 1 RECORDED IN LIBER 12 OF PLATS, PAGES 88-96, EATON COUNTY RECORDS.

CURVE	LENGTH	MAJORS	DELTA	CHORD	DIRECTION
C1	206.55	206.00	81.4731	272.51	N41°14'48"E
C2	208.01	142.00	83.5042	389.85	N45°16'25"E
C3	177.78	208.00	50.1151	176.78	N49°22'56"E
C4	81.23	142.00	59.1151	85.87	N43°22'56"E
C5	81.23	142.00	59.2050	85.23	S18°18'22"E
C6	126.32	208.00	50.2050	126.32	S18°18'22"E
C7	203.84	118.00	80.2226	278.78	N48°50'28"E
C8	235.81	160.00	84.1927	255.16	N44°09'48"E



Remold L. Snyder
SHEET 1 OF 2

Street Address: Lansing
 Taxing Authority: Delta Township
 School District: Grand Ledge
 www.cvebuilders.com



Technically Savvy,
Results Driven!

The Tracy Snyder Team

Tracy Snyder
 517-402-6544
 email: tracy@tracysnydereteam.com